

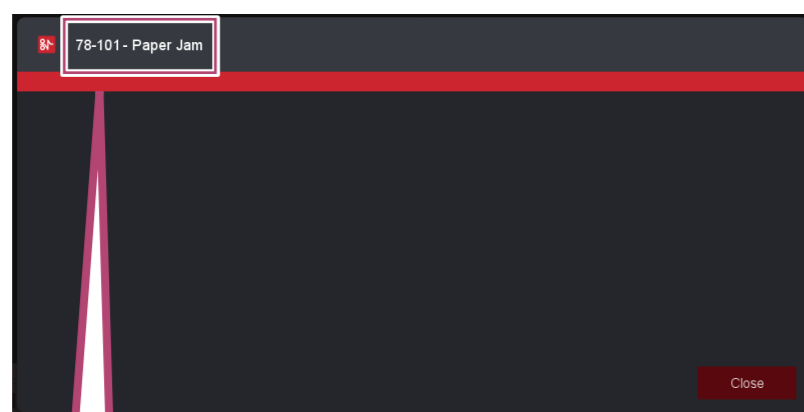
# Set an Air Assist Profile

Revoria Press PC1120

July 2022 Edition 4

Check an error code displayed if Misfeed/Multifeed has occurred at the Air Trays and Long Paper Tray.

Feeding issue will be resolved by setting an Air Assist profile corresponding to a displayed error code.



Misfeed->p.2		Multifeed->p.3 or p.4
• 78-101	• 78-131	• 77-131
• 78-151	• 78-132	• 77-132
• 178-101	• 178-131	
• 178-151	• 178-132	

Make sure the followings before you set an Air Assist profile.

- If the paper size, type and weight are correctly set
- If paper is correctly set at the Paper Tray

**Note**

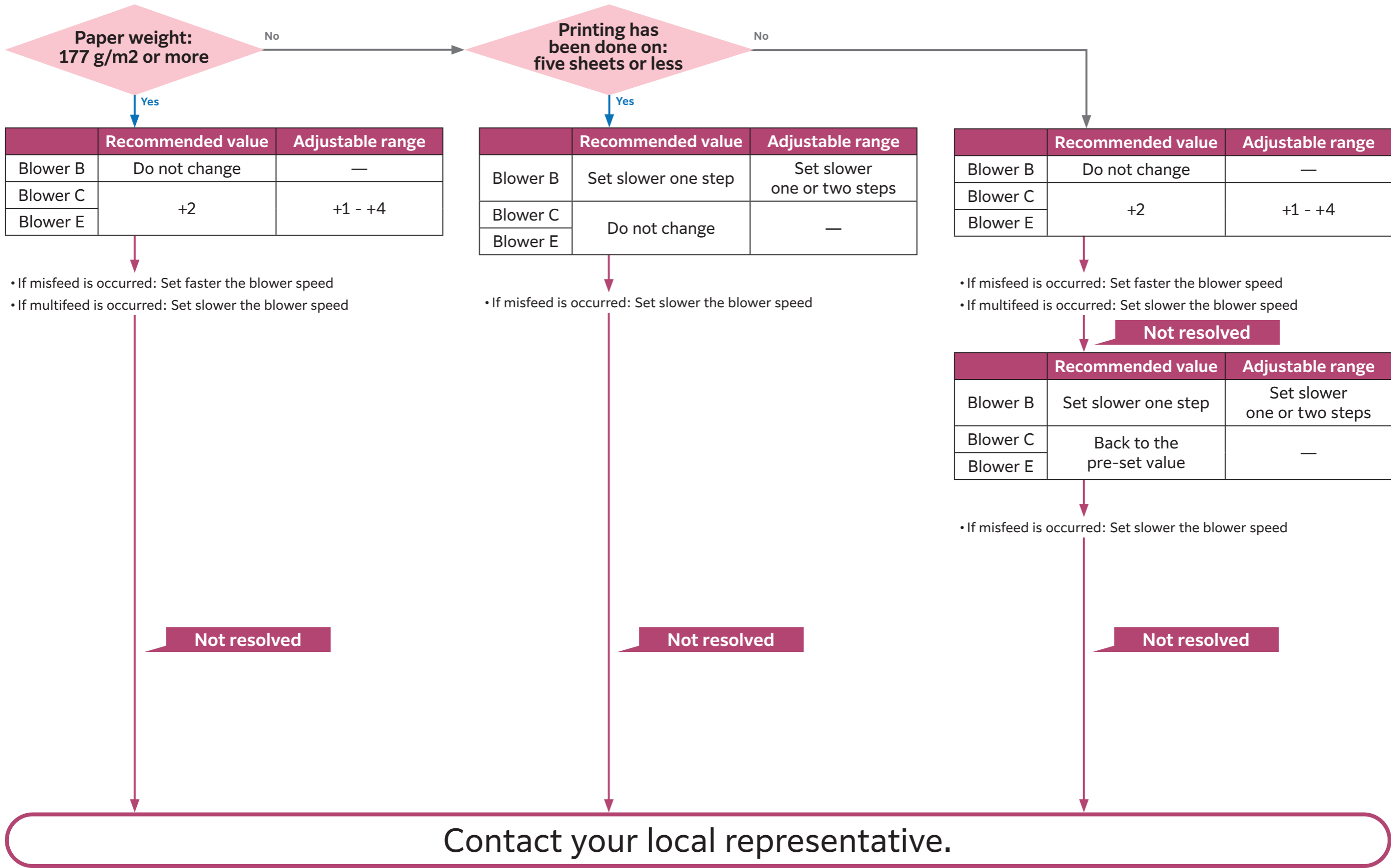
Adjust a guide correctly to match with a paper size.

- Use paper in good condition
  - Paper Curl Correction is needed if paper is curled.
  - Loosening paper well is needed if the cutting surfaces of paper have burrs (cutting surfaces of paper).

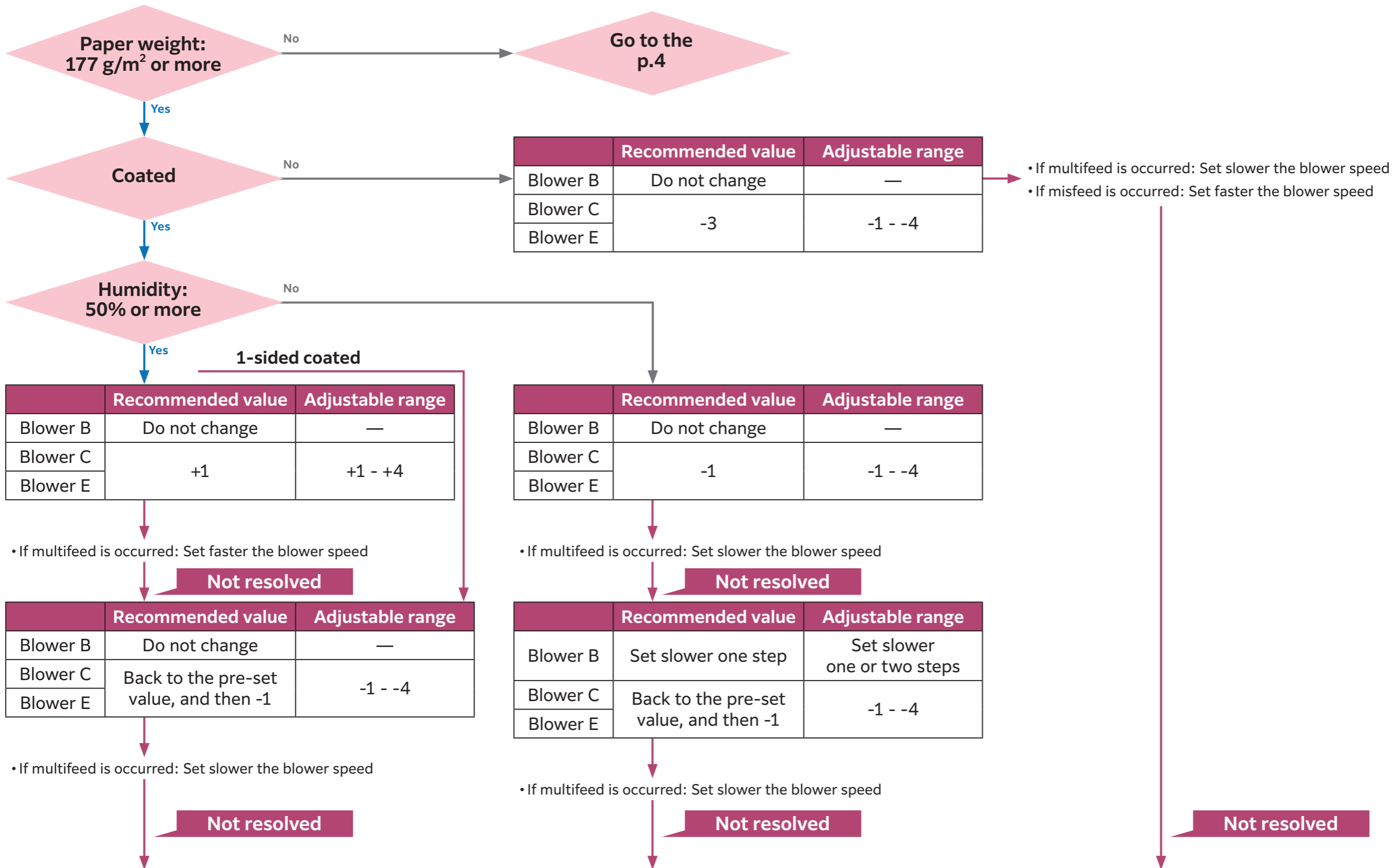
## Notice when setting

- Blower B
  - Power is strengthened step by step in the order of Off, Low, Medium, and High.
  - Pre-set value [Off]: Do not change the setting
  - Pre-set value [Low]: Do not change it to "Off" if instructed to "slow down"
- Blower C and Blower E
  - Check a current value, and then increase or decrease a value instructed in a table. (e.g. if the current setting is 5 and the value in the table is +2, change it to 7)
  - Pre-set value [1]: Fan is not operated. Do not change the setting.
  - Pre-set value [2]: Do not change it to "1" if instructed to "slow down"

# Misfeed

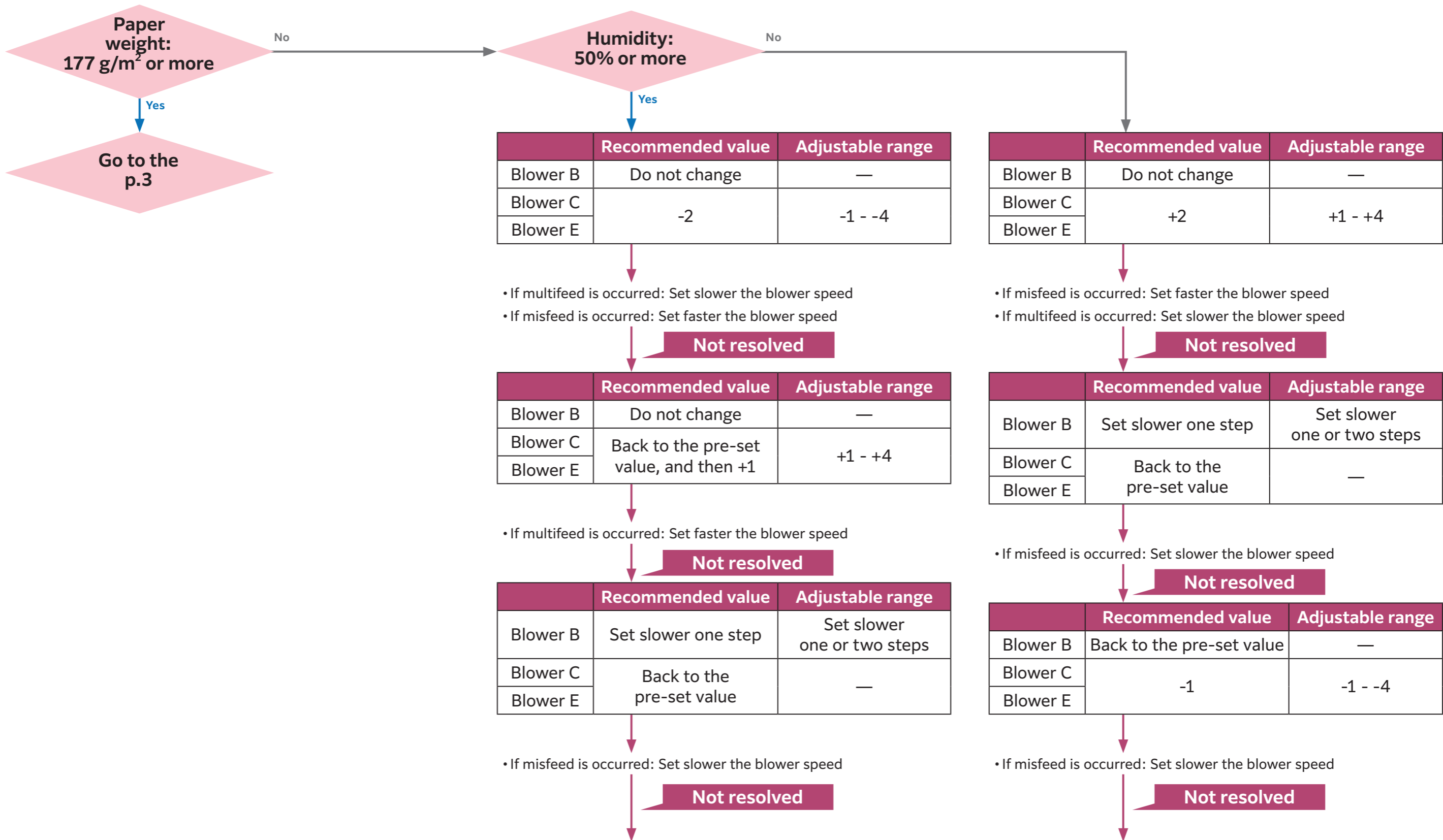


# Multifeed



Contact your local representative.

# Multifeed



Contact your local representative.