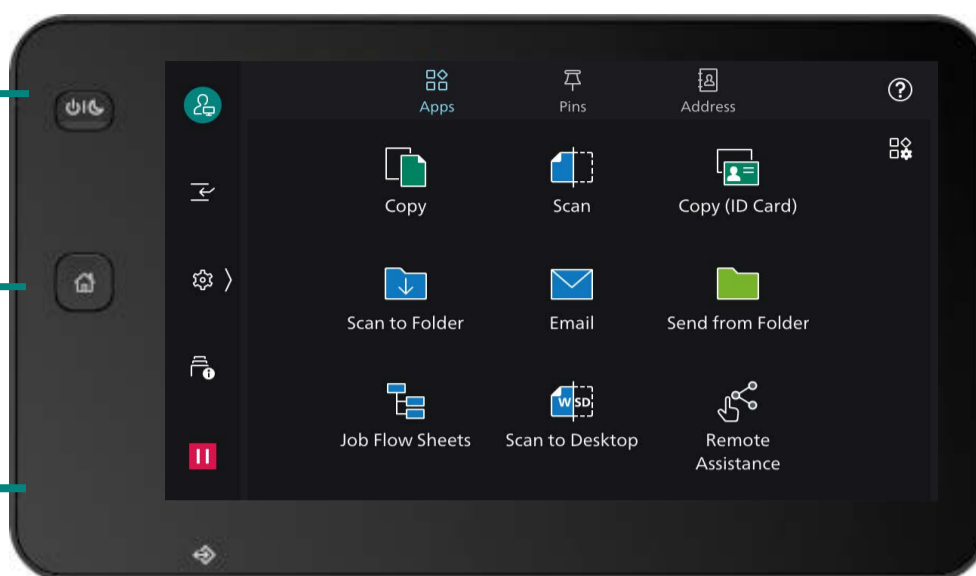


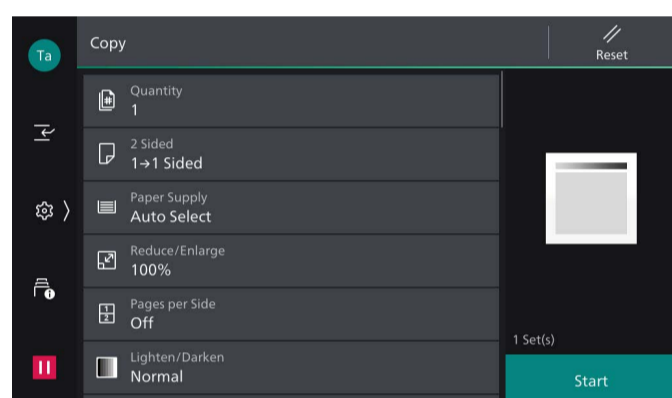
<Power/Power Saving> Button  
(Power On/Off or Enter/Exit Power Saver)

<Home> Button  
(Press to display Home screen)

<NFC Touch Area>  
(Hold NFC device over this area)



<Data Indicator>  
(Indicates when data or faxes are stored)

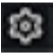


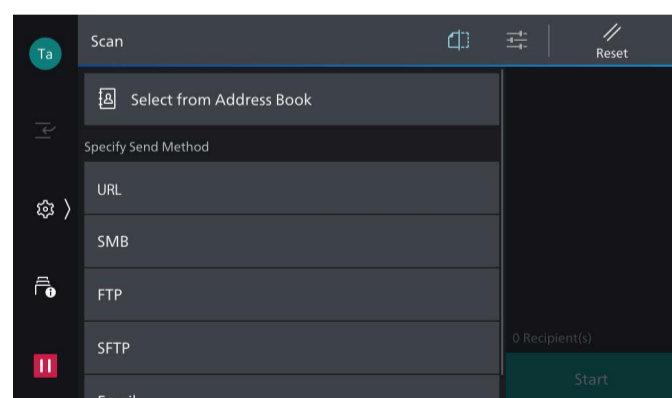
### Copy

1. Tap Copy on the Home Screen
2. Configure the required features
3. Set the Quantity
4. Tap Start



### Finding Serial Number & IP Address

1. Tap  on the Home screen
2. Tap Device Status
3. The serial number and IP address will be displayed on the screen
4. Find the serial number or IP address of the device



### Scanning

1. Tap Scan on the Home Screen
2. Select the scan method or tap Select from Address Book.
3. Select the required address, then tap OK
4. Tap the Features List and configure the required features
5. Tap Start



#### More online resources are available for your product

1. Apple iOS users: Read QR code with the mobile's camera (Note: Android use chrome web browser).
2. Other mobile users: Download a QR Code Reader Application onto your mobile device, then open the app.
3. Hold device camera over the QR.
4. The FUJIFILM Business Innovation Support Centre will open.

#### Access self help, drivers, documentation, videos & more:

- a. Enter your product name or number into the search box
- b. Select your product name from the list of suggestions.
- c. Choose the type of support that you require.

support-fb.fujifilm.com